

MS4 Name:

UofA Little Rock

ARR040020

Yes	No	N/A	Requirement	Permit Reference	Comments
x			Signed by Responsible or Cognizant Official?		
x			Table of Organization?		
			Public Education and Outreach on Stormwater Impacts	3.2.1	
x			More than 1 mechanism?	3.2.1.3	
x			At least 5 stormwater themes?	3.2.1.3	
		x	At least 1 theme or message targeted to land development?	3.2.1.3	
x			At least 50 percent of population intended to be reached?	3.2.1.3	
			For each mechanism, are the following included?:	3.2.1.4	
x			Stormwater Theme	3.2.1.4	
x			Target Audience	3.2.1.4	
x			Number of People Reached	3.2.1.4	
			Public Involvement/Participation	3.2.2	
x			At least 5 public involvement activities?	3.2.2.3	
			For each activity, are the following included?:	3.2.2.4	
x			Brief Description of Activity	3.2.2.4	
x			Number of Participants	3.2.2.4	
			Illicit Discharge Detection and Elimination	3.2.3	
x			Number of outfalls dry-weather screened?	3.2.3.11	
x			Number of dry-weather flows identified?	3.2.3.11	
x			Number of illicit discharges identified?	3.2.3.11	
		x	Number of illicit discharges eliminated?	3.2.3.11	
x			Schedules for elimination of remaining illicit discharges?	3.2.3.11	
x			Summary of any storm sewer mapping updates?	3.2.3.11	
			Construction Site Stormwater Runoff Control	3.2.4	
x			Number of applicable sites in the MS4 jurisdiction?	3.2.4.4	
x			Number of pre-construction site plan reviews performed?	3.2.4.4	
x			Number and frequency of site inspections?	3.2.4.4	
x			Number of violation letters issued?	3.2.4.4	
x			Number of enforcement actions taken?	3.2.4.4	
x			Number of complaints received and number followed up on?	3.2.4.4	
			Post-Construction Stormwater Management in New Development and Redevelopment	3.2.5	
x			Number of applicable sites in the jurisdiction requiring post-construction controls?	3.2.5.7	
x			Number of pre-construction site plan reviews performed?	3.2.5.7	
x			Number of inspections performed to ensure built per requirements?	3.2.5.7	
x			Compliance rates with MS4 requirements?	3.2.5.7	
x			Number of long-term operation and maintenance (O&M) plans developed and agreements in place?	3.2.5.7	
			Pollution Prevention/Good Housekeeping for Municipal Operations	3.2.6	
x			Summary of employee training programs implemented with number of employees that attended?	3.2.4.4	
x			Summary of activities and procedures implemented for the operation and maintenance program?	3.2.4.4	
		x	For first year MS4s, evaluation of municipal-owned facilities for ARR000000 eligibility?		
			Additional Requirements	4.3	
		x	Progress toward achieving measurable goals?	4.3.1.1	
		x	Results of information collected and analyzed, if any?	4.3.1.2	
		x	Future stormwater activities including an implementation schedule?	4.3.1.3	
		x	Proposed changes to the SWMP including changes to any BMPs or any measurable goals?	4.3.1.4	
		x	Description and schedule for implementation of additional BMPs that may be necessary, based on monitoring results, to ensure compliance with applicable TMDLs and implementation plans?	4.3.1.5	
		x	Notice that the permittee is relying on another government entity to satisfy some of the permit obligations, if applicable?	4.3.1.6	

NPDES Small MS4 General Permit (ARR040000) Annual Reporting Form

Instructions for completing this form:

- ARR040000 requires that this form be used when submitting annual reports. You may request approval to use your own reporting format.
- Annual Reports are due annually on or before June 1st.
- Complete the form and sign and date the certification statement below.
- If more space is needed than is provided, identify within the provided space that Attachment A, B, C, etc. has been attached.
- If an item of the form is not applicable for your program (such as street sweeping), fill in N/A in the space provided.
- Don't include attachments such as brochures, newspaper clips, sign-in sheets, etc. related to your program with this form. You only need to summarize these within this report. These records must be filed and will be needed during program audits.
- Please attach results of monitoring required for TMDL or impaired streams separately from this form.
- When complete, submit this Annual Report form to the following address:

ADEQ
 Water Division
 General Permits Section
 5301 Northshore Drive
 North Little Rock, AR 72118
 Water-permit-application@adeq.state.ar.us

Small MS4 Annual Report for Year: 2019

ADEQ Permit Tracking Number:ARR040020

Name of MS4: University of Arkansas at Little Rock

Primary Contact: Vince Rodgers

Title: Director of EHS & Chemical Hygiene

Mailing Address: 2801 S. University Ave

City: Little Rock

Zip Code: 72204

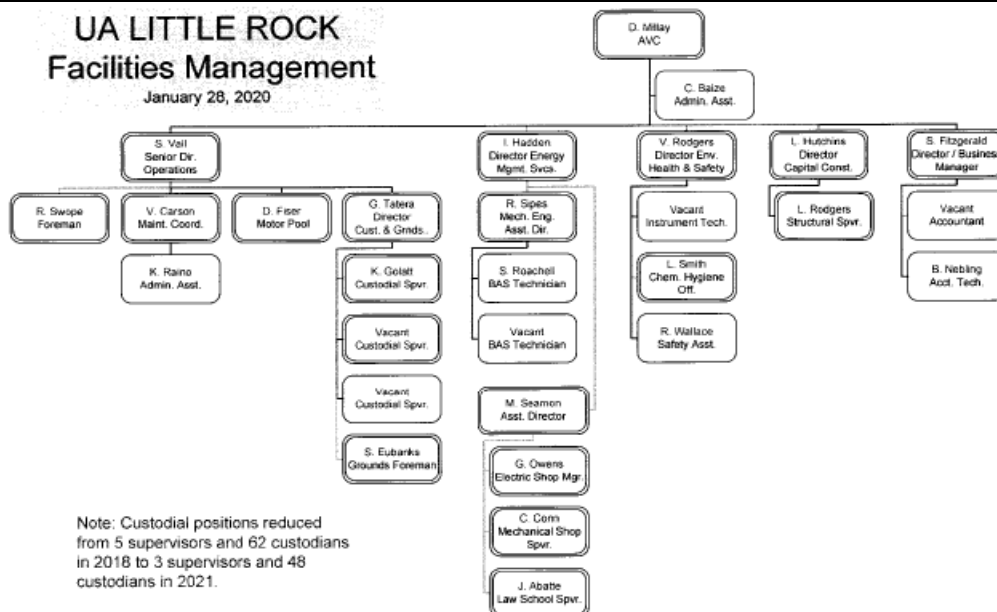
County: Pulaski

Telephone Number: 501-371-7602

Email Address: varodgers@ualr.edu

Include or attach a Table of Organization. Indicate who (name and contact information) is responsible for overall management and implementation of your program, and if different, each minimum control measure of your program. Identify how development and implementation across multiple positions, agencies and departments occur. Also, identify any Memorandum of Understandings (MOUs) or other such agreements that exist.

UA LITTLE ROCK Facilities Management January 28, 2020



Note: Custodial positions reduced from 5 supervisors and 62 custodians in 2018 to 3 supervisors and 48 custodians in 2021.

I certify under penalty of law that this document and all attachments were prepared under my direction or supervision in accordance with a system designed to assure that qualified personnel properly gather and evaluate the information submitted. Based on my inquiry of the person or persons who manage the system, or those persons directly responsible for gathering the information, the information submitted is, to the best of my knowledge and



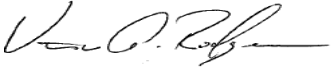
ARKANSAS
Department of Environmental Quality

SMALL MS4 ANNUAL REPORT FORM

belief, true, accurate and complete. I am aware that there are significant penalties for submitting false information, including possibility of fine and imprisonment for knowing violations.

Print Name: Vince Rodgers

Print Title: Director of EHS & Chemical Hygiene

Signature: 

Date: 6-11-20

SMALL MS4 ANNUAL REPORT FORM

PUBLIC EDUCATION & OUTREACH

Estimate Your Permit Area's Total Population: 10,000

BMP (mechanism) & Responsible Party	Measurable Goal	Theme or Message	Target Audience	% of Target Audience Reached & Total # of people reached	Summary of Results	Effective (Yes or No)
EHS Stormwater website. EHS	Direct source for feedback from the community.	UALR is making a concerted effort to reduce runoff impact to adjacent waterways	Faculty, Staff, and students	0 hits to website – no comments	Expected	Yes
Earth Day Celebration (Spring) and Campus Sustainability Day (Fall) Sustainability Committee	Spring celebration cancelled due to COVID-19					Yes
Campus Recycling Program Grounds Dept	Ongoing effort to collect and recycle paper, plastic, glass, aluminum	Sustainability / Pollution	Faculty, staff, and students	Collection bins are placed in all buildings in multiple areas so individuals will have additional opportunities to recycle.	Custodians empty and replace the bins daily.	Yes
Hazardous waste MGMT through chemical hygiene program EHS	Reduce/eliminate spills of HazMat resulting in illicit discharges. Includes universal waste. Spill control plan is complete.	Exposure / Sustainability / Pollution	Faculty, staff, and students	Target audience is primarily chemical users so awareness is facilitated through policy and training.	Approx. 40 workers/students are trained through EHS. Policy is enforced by EHS affecting all faculty, staff, and students using HAZMAT	Yes

SMALL MS4 ANNUAL REPORT FORM

PUBLIC INVOLVEMENT/PARTICIPATION

BMP (Activity) & Responsible Party	Measurable Goal	Theme or Message	Target Audience	Estimate of People Participated	Summary of Results	Effective (Yes or No)
Earth Day Celebration (Spring) and Campus Sustainability Day (Fall) Sustainability Committee/ Grounds Dept.	Cancelled due to COVID-19	Sustainability / Pollution	Faculty, staff, and students			Yes
UALR Recycling Program Operations	Collection of recyclables from campus bins, also glass, batteries, ballasts, lamps	Sustainability / Pollution	Faculty, staff, and students	Available bins in every building to all users ~10,000	Estimated waste collection over 40,000 lbs	Yes
Hazardous Waste MGMT program EHS	HazMat pickup and collection of chemical waste and used oil for Lab-Pak disposal. Proper storage procedures.	Safety / Sustainability / Pollution	Faculty, staff, and students	100 training modules were taken in 2019	Various chemical and biological wastes collected, stored, and properly, disposed of. Includes used oil.	Yes

SMALL MS4 ANNUAL REPORT FORM

ILLICIT DISCHARGE DETECTION & ELIMINATION (IDDE)

BMP & Responsible Party	Measurable Goal	Completed (Yes or No)	Cite Local Code(s) Being Used (If available, web link for code(s))	Summary of Results or Activities		Effective (Yes or No)	
Ordinance or Other Regulatory Mechanism	Minimize or eliminate the potential for illicit discharges.	Complete	ADEQ Reg 6 – where applicable http://www.adeg.state.ar/water/regulations.htm EPA-40 CFR 122.26	Collection of HazMat and through EHS personnel efforts facilitates the transfer of awareness and knowledge that ultimately reduces opportunities for discharge.		Yes	
Hazardous Material MGMT, discharge monitoring, SWMP Vince Rodgers							
BMP & Responsible Party	Measurable Goal	Completed (Yes or No)	Summary of Activities or Updates			Effective (Yes or No)	
Storm Sewer System Map	ID flow patterns & outflows	Yes	Map created which IDs outfalls. Elevations ID through PAGIS online.			Yes	
Spill Prevention Control & Countermeasure Plan (EHS)	Elimination and mitigation of spills	Yes	Comprehensive spill control plan to mitigate illicit spills and discharges			Yes	
BMP & Responsible Party	Measurable Goal	Completed (Yes or No)	Summary of Activities or Updates			Effective (Yes or No)	
IDDE Plan/Sampling	SWMP maintenance. Identify abnormal parameters in Coleman Creek	Yes SWMP – sampled Coleman Creek during discoloration event-worked with City of LR	The UALR SWMP is on line and available for anyone to review at http://ualr.edu/facilities/home/environmental-health-safety/policies-procedures/environmental-protection/stormwater-management-plan/ . Campus is continually monitored for illicit discharges. Followed up on discoloration in Coleman, took several samples on campus and upstream with Earth Science Professor and working with the City. No illicit activity was suspected, just normal heavy rain load occurrence.			Yes	
EHS							
BMP & Responsible Party	Measurable Goal	Completed (Yes or No)	# of Outfalls Screened	# of Dry-Weather Flows Identified	# Of Illicit Discharges:		Effective (Yes or No)
					Identified*	Eliminated	
Dry-Weather Screening of Outfalls # of Outfalls Screened <u>56</u> Total # of Outfalls <u>28</u>	Notification and quick response	Yes	56	0	0	0	Yes
EHS							
BMP & Responsible Party	Measurable Goal	Completed (Yes or No)	Summary of Activities or Updates			Effective (Yes or No)	
Identification of allowable non-stormwater discharges	Reduce runoff from non-rain events	Yes	Restrict and monitor allowable discharges. No illicit discharges were identified			Yes	

SMALL MS4 ANNUAL REPORT FORM

Surveillance as needed				
EHS				

*Include an attachment which provides schedules for elimination of illicit connections that have been identified but have yet to be eliminated.

SMALL MS4 ANNUAL REPORT FORM

CONSTRUCTION SITE RUNOFF CONTROL

BMP & Responsible Party	Measurable Goal	Completed (Yes or No)	Cite Local Code(s) Being Used (If available, web link for code(s))		Summary of Results or Activities	Effective (Yes or No)	
Ordinance or Other Regulatory Mechanism	Contractor management through SWMP – site assessment and control maintained	Yes	ADEQ Reg 6 – Construction SW program		Minimized erosion and runoff through SWPPP maintenance and monitoring.	Yes	
SWMP – EHS							
BMP & Responsible Party	Measurable Goal	Completed (Yes or No)	Standards Being Used		Summary of Results or Activities	Effective (Yes or No)	
Sediment and Erosion Control Requirements	Reduce opportunity for runoff and erosion	Yes	ADEQ Reg 6		Monitor and assess contractors BMPs and methods	Yes	
SWMP – EHS							
BMP & Responsible Party	Measurable Goal	Completed (Yes or No)	Complaints		Summary of Results or Activities	Effective (Yes or No)	
			Received	Followed-Up On			
Complaint Process	Operations center notification-actions dictated by EHS for correction	Yes	0	0	No construction applicable	Yes	
FM Operations Center							
BMP & Responsible Party	Measurable Goal	Completed (Yes or No)	# of Applicable Sites Requiring Plans	# of Plans Reviewed	Summary of Results or Activities	Effective (Yes or No)	
Site Plan Review Procedures	Reduction in erosion & runoff opportunity	Yes	0	0		Yes	
SWPPP Review EHS							
BMP & Responsible Party	Measurable Goal	Completed (Yes or No)	Site Inspections Performed			Summary of Results or Activities	Effective (Yes or No)
			# of Applicable Sites	# Performed	Avg. Frequency		
Site Inspection Procedures	Maintain BMPs by routine inspection	Yes	0	0		No site inspected	Yes
SWPPP Contractor & EHS							
BMP & Responsible Party	Measurable Goal	Completed (Yes or No)	Violations		Summary of Results or Activities	Effective (Yes or No)	
			# of Violation Letters	# of Enforcement Actions			
Enforcement Procedures	Deter illicit discharge	Yes	0	0	N/A	Yes	
SWMP – Public Safety	Reported Violations						

*Include an attachment which identifies applicable sites within your jurisdiction for this reporting period.

SMALL MS4 ANNUAL REPORT FORM

POST-CONSTRUCTION STORM WATER MANAGEMENT IN NEW DEVELOPMENT AND REDEVELOPMENT

BMP & Responsible Party	Measurable Goal	Completed (Yes or No)	Cite Local Code(s) Being Used (If available, web link for code(s))		Summary of Results or Activities	Effective (Yes or No)
Ordinance or Other Regulatory Mechanism	Effectiveness of regulations	Yes	ADEQ Reg 6		All construction projects are maintained and brought to acceptable conditions during and after construction phase by inspection. Landscaping & Grounds crews maintain the areas from that point.	Yes
SWMP, SWPPP Review - EHS						
BMP & Responsible Party	Measurable Goal	Completed (Yes or No)	Structural and/or Non-Structural Standards Being Used		Summary of Results or Activities/Compliance rates with MS4 requirements	Effective (Yes or No)
Post-Construction Requirements	Qualify that BMPs were effective by previous inspections and outfall reports.	Yes	Applicable ASTM/ANSI Standards		Final acceptance based on completeness of drainage systems and landscaping areas.	Yes
Final Review SWPPP - EHS						
BMP & Responsible Party	Measurable Goal	Completed (Yes or No)	# of Applicable Sites Requiring Post-Const. BMPs	# of Plans Reviewed	Summary of Results or Activities	Effective (Yes or No)
Site Plan Review Procedures	Site plan effectiveness over project duration	Yes	0	0	All site plans are reviewed prior to and post construction for implementation of SWPPP in accordance with the UALR SWMP. EHS works with contractors to assure proper stormwater management and completion of satisfactory measures to ensure long term SWMP goals	Yes
SWPPP – EHS						
BMP & Responsible Party	Measurable Goal	Completed (Yes or No)	Site Inspections Performed		Summary of Results or Activities	Effective (Yes or No)
			# Performed	Avg. Frequency		
Site Inspection Procedures	Final review of site plan and drainage	Yes	0	0		Yes
SWPPP - EHS						
BMP & Responsible Party	Measurable Goal	Completed (Yes or No)	Violations		Summary of Results or Activities	Effective (Yes or No)
			# of Violation Letters	# of Enforcement Actions		
Enforcement Procedures	Number of reported violations, spills, illicit discharges	Yes	0	0	N/A	Yes
EHS – Public Safety						
BMP & Responsible Party	Measurable Goal	Completed (Yes or No)	# of Sites Requiring Plans/Agreements	# of Plans Developed/Agreements in Place	Summary of Results or Activities	Effective (Yes or No)
Long-Term O&M Plans/Agreements			0	0		

SMALL MS4 ANNUAL REPORT FORM

POLLUTION PREVENTION/GOOD HOUSEKEEPING FOR MUNICIPAL OPERATIONS

BMP & Responsible Party	Measurable Goal	Completed (Yes or No)	Topic(s)	Targeted Audience	# of Employees Attended	Summary of Activity	Effective (Yes or No)				
Training Program SPCC Plan	Elimination/mitigation of spills	Yes	BBP, SDS, Haz Waste, spill prevention, & Chemical Hygiene	Employees / students	~100	Online and lecture	Yes				
UALR-EHS-Teaching units where HazMat is used											
List of Municipal Facilities Subject to Program					O&M Procedures Developed for Facilities (Yes or No)	# of Facility Inspections Performed	Frequencies of Such Inspections				
N/A					N/A	N/A	N/A				
MS4 Maintenance	Summarize Maintenance Activities and Schedules			Summarize Activities Performed							
	The reporting period involved maintenance of existing green space weekly, collecting trash daily, vehicle maintenance, minor spill cleanup. etc.			Same							
Disposal of Wastes	Procedures Developed (Yes or No)		Document Amounts of Wastes Properly Disposed								
	Yes		Approx 20,000 yards + 2 Lab Packs ~800 lbs								
Road Salt	Covered (Yes or No)		Tons Used	Summarize Measures Taken to Minimize Usage							
	No		0	No salt used only Icemelt. None used in 2019.							
Pesticide & Herbicide Usage	Procedures Developed (Yes or No)		Gallons Used	Summarize Measures Taken to Minimize Usage							
	Yes		25 lbs dry 15 gal wet								
Fertilizer Usage	Procedures Developed (Yes or No)		Pounds Used	Summarize Measures Taken to Minimize Usage							
	Yes		~3000 lbs	Used as needed							
Street Sweeping	Procedures Developed (Yes or No)		Document Amount of Material Collected and Properly Disposed								
	No		Street sweeper is inoperable. Waste is collected by hand as necessary.								
Flood Management Projects	Summarize any New or Existing Flood Management Projects that were Assessed for Impacts on Water Quality										

SMALL MS4 ANNUAL REPORT FORM

	None
--	------

SMALL MS4 ANNUAL REPORT FORM

PROPOSED CHANGES TO YOUR SWMP (IF ANY)

- Summarize any proposed changes to your SWMP, including changes to any BMPs or any identified measurable goals that apply to the program elements. If you fail to satisfy measurable goals for the reporting year, please explain why.

None

VARIANCES GRANTED (IF ANY)

- Identify and summarize any variances granted under your storm water program.

None